

2018 Braxton County Memorial Hospital Community Health Needs Assessment



***Braxton County Memorial Hospital
100 Hoylman Drive
Gassaway, WV 26624***

REPORT DATE:

August 22, 2018

SURVEY PERIOD:

Months of April 2018- August 2018

PURPOSE OF THIS SURVEY:

In compliance with the Patient Protection and Affordable Care Act, and to better serve the community, Braxton County Memorial Hospital performed a community health needs assessment to identify the perceived needs of the community it serves.

PROCESS:

Written surveys were mailed to 200 homes in the hospital's service area, which includes the surrounding counties of Clay, Gilmer, Lewis, Nicholas, Webster. Survey recipients were selected at random from an admissions report detailing only name and address. Thirty-one percent, or 62 surveys were returned.

BRAXTON COUNTY MEMORIAL HOSPITAL:

Established in 1981, BCMH is a non-profit, Critical Access Hospital that serves Braxton and parts of Clay, Gilmer, Lewis, Nicholas and Webster counties. BCMH is the only hospital located in Braxton County and operates a 25 bed, not-for-profit facility. Situated in the central portion of Braxton County, West Virginia, BCMH has extensive outpatient capabilities as well as inpatient services. The hospital offers 24-hour emergency care and is recognized as a designated level IV trauma center, as well as offering quality inpatient acute care, skilled nursing (swing) beds, respite care, inpatient and outpatient surgery, and home health care. The hospital has an extensive outpatient facility which includes outpatient nursing and laboratory services, in addition to EKG, pulmonary function and stress testing through cardio-pulmonary. Radiological services include 16-slice CT scans, open MRIs, x-rays, enhanced nuclear medicine, digital mammography and bone density testing. Primary care physician services are available in the Braxton Community Health Center, which also include women's health services. Gassaway-Glenville Physical Therapy Specialists, Inc. and Braxton Imaging (ultrasound) provide services at the hospital as well.

BRAXTON COUNTY:

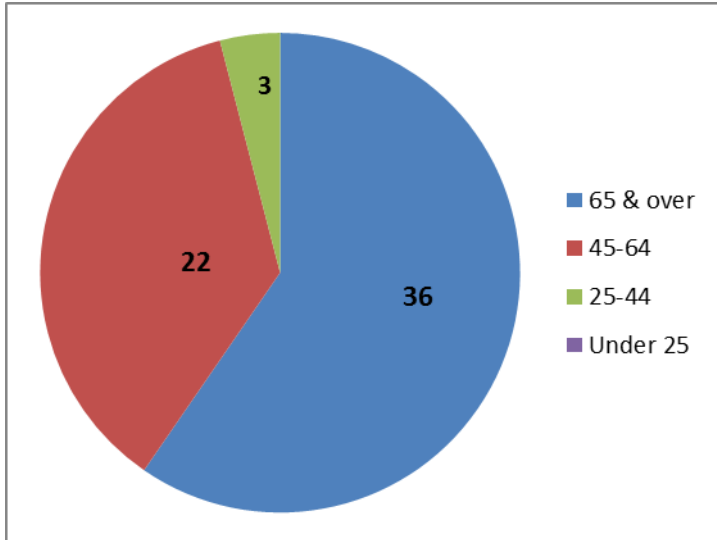
Braxton County is in the central part of the U.S. State of West Virginia and according to the United States Census Bureau, has a population of just over 14,000 people. Braxton County's central location in the state puts BCMH sixty-two (62) miles or approximately sixty (60) minutes North of the nearest level I trauma center in Charleston, WV, and ninety-seven (97) miles or approximately 1 hour and 38 minutes to the South of the second nearest level I trauma center in Morgantown, WV.

Data collected from the U.S. Census Bureau suggests that the median household income in Braxton County is around \$38,000.00, indicating that 21% of residents fall below the federal poverty guidelines.

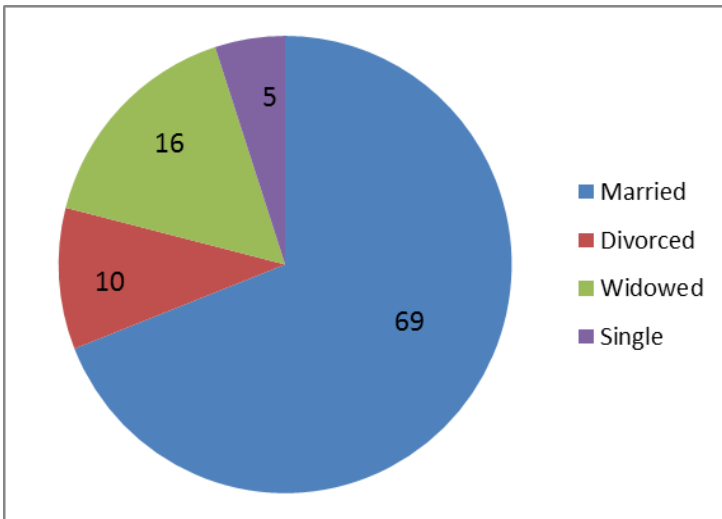
SURVEY RESPONSE OVERVIEW

The number of surveys returned totaled 62 for a 31% response rate. Of the 60 respondents who filled in the request for a zip code on the survey, 50 were from Braxton County zip codes and 10 were from neighboring West Virginia zip codes.

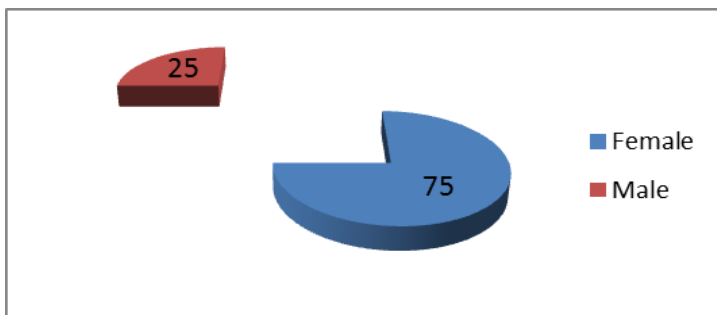
The following is a breakdown of the response received from each question asked on the survey.



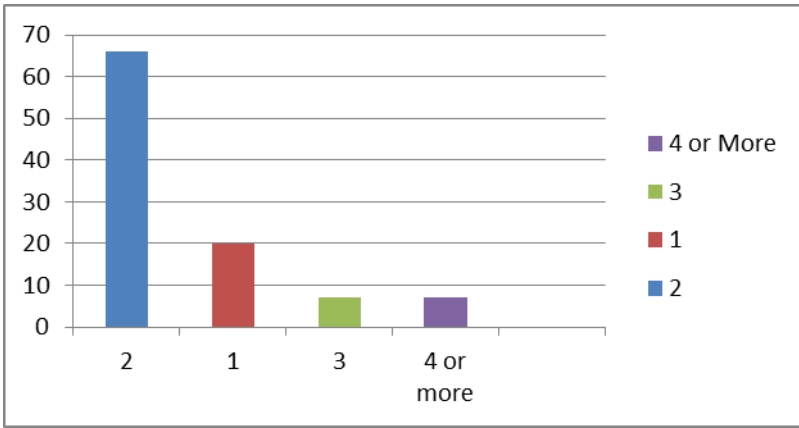
What is your age? 61 people gave their age as listed on the chart: 36 people (59%) are 65 & over; 22 (36%) are 45-64; 3 (4%) are 25-44. No respondents indicated that they were under the age of 25.



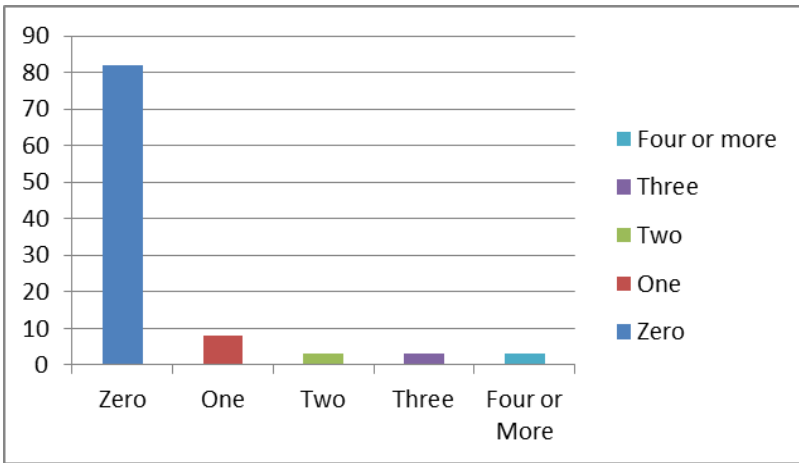
What is your marital status? 62 people gave their marital status as listed on the chart: 43 people or 69% are married; 6 (10%) are divorced; 10 (16%) are widowed and 3 (5%) are single.



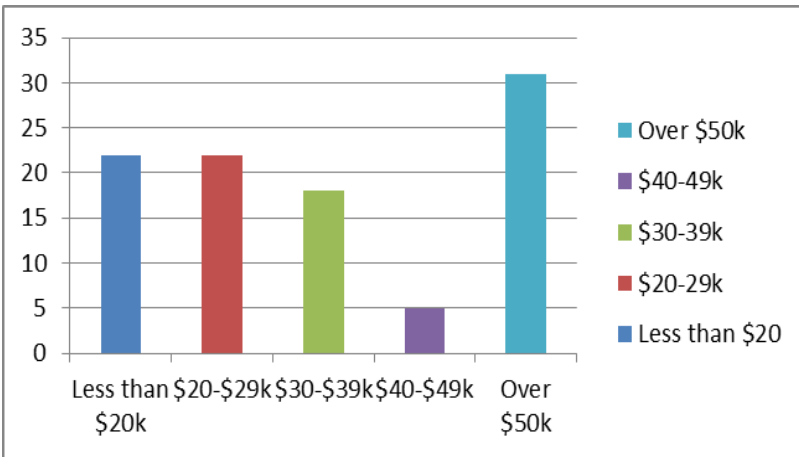
What is your gender? 60 people indicated their gender as listed on the chart: 75% or 45 people are female and 25% or 15 people are male.



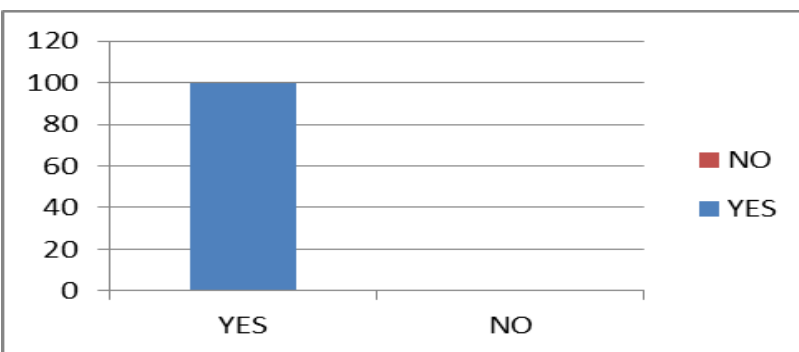
How many adults are in your household (18 or older)? 59 people answered the question as indicated on the chart. 39 (66%) indicated there were 2 adults living in the household; 12 (20%) indicated there was only one adult in the household; 4 (7%) indicated there were 3 adults in the household, as well as an equal percentage of 7% who indicated there were 4 or more adults in the household.



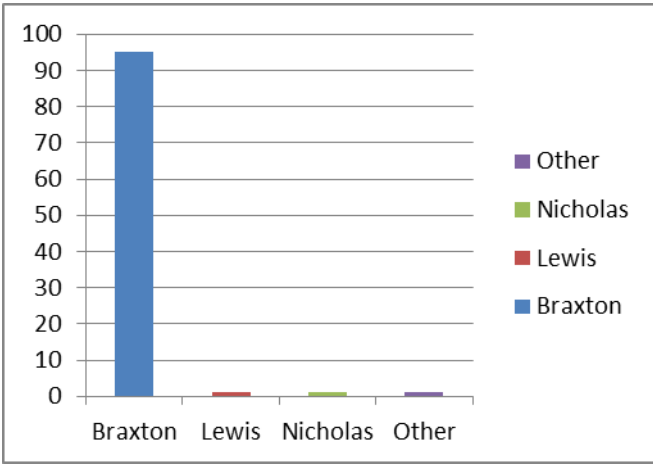
How many children are in our household (17 or younger)? 60 people answered the question as indicated on the chart. 49 people, or 82% indicated there were zero children living in the household; 5 (8%) indicated there was one child living in the household; An equal percentage of 2 people (3%) was indicated for all three options of two, three and 4 or more children living in the household.



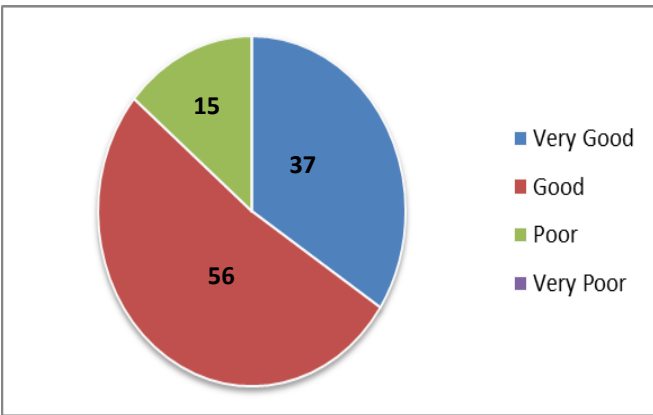
What is your household income? 54 people answered the question as indicated on the chart. Equal amounts of 12 people, or 22% indicated an annual household income of Less than \$20k or \$20 to \$29k; 10 (18%) indicated an annual household income of \$30-39k; 3 (5%) indicated an annual household income of \$40-49k; the largest percentage reported was 17 people, or 31% who indicated an annual household income of over \$50k.



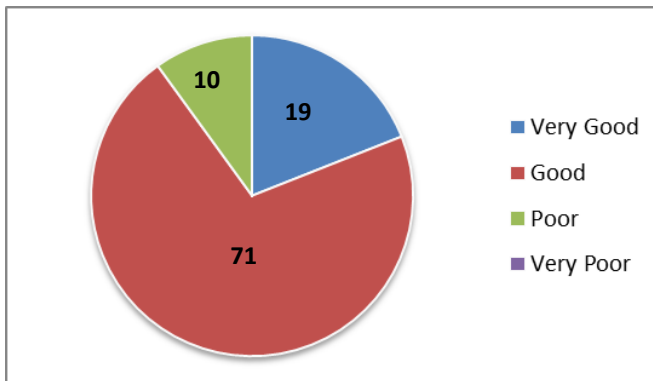
Do you have health insurance? 62 people answered the question as indicated on the chart. All 62 people or 100% indicated they did have health insurance. There were zero respondents who indicated having no insurance.



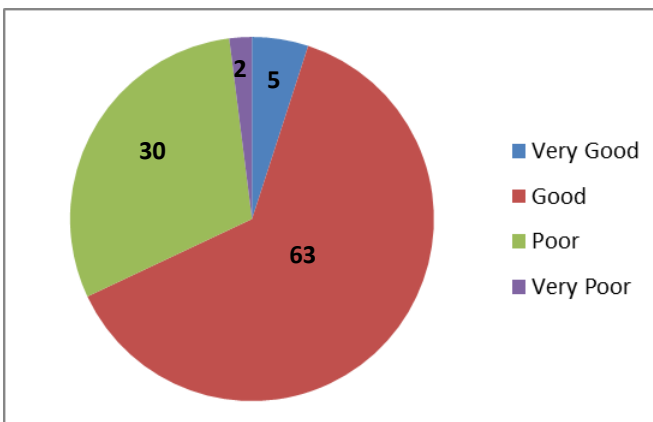
Where do you and members of your household go for health care services such as emergency care or hospital care? 61 people answered the question as indicated on the chart. 58 people, or 96% indicated they seek health care services in Braxton County. An equal 1 person, or 1% indicated they seek services from Lewis and/or Nicholas Counties. 1 person or 1% also marked “other” on the survey and indicated that they seek services from Kanawha County for their healthcare needs.



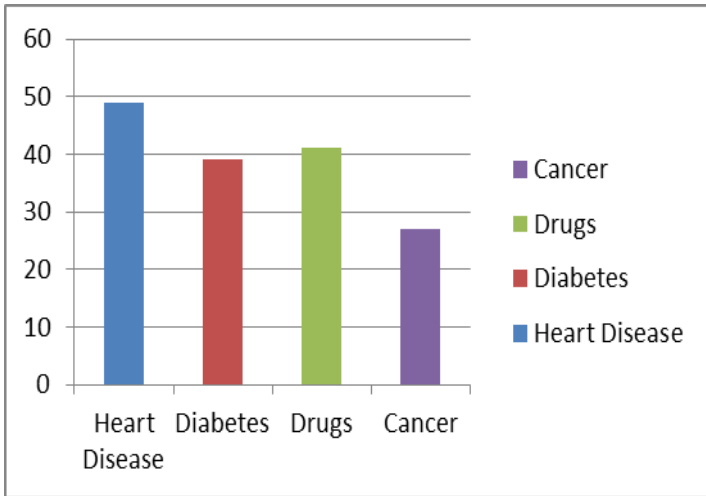
If you have children, how would you rate Braxton County as a good place to raise your children? 41 people answered this question as indicated on the chart. 15 people, or 37 % consider Braxton County a very good place to raise children; 23 people, or 56% consider Braxton County a good place to raise children; 3 people, or 15% consider Braxton County a poor place to raise children. No respondents marked Very Poor in regards to this question.



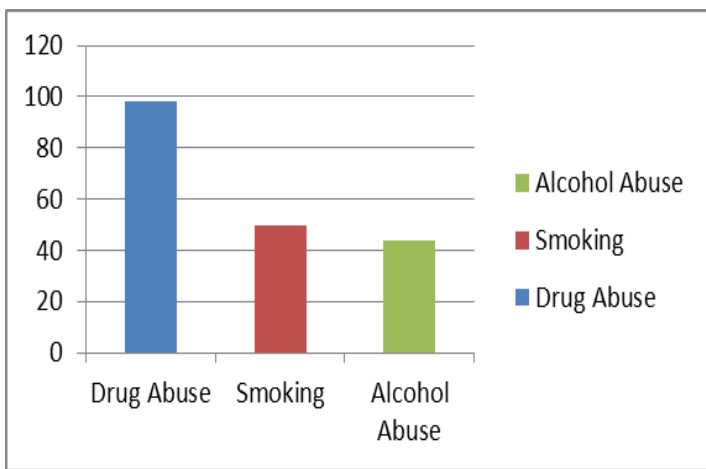
How would you rate the support system for the elderly in Braxton County? 58 people answered this question as indicated on the chart. 11 people, or 19% rated the support system for the elderly in Braxton County as Very Good; 41 people or 71% indicated a Good rating; 3 people, or 10% indicated a rating or Poor. No respondents marked Very Poor in regards to this question.



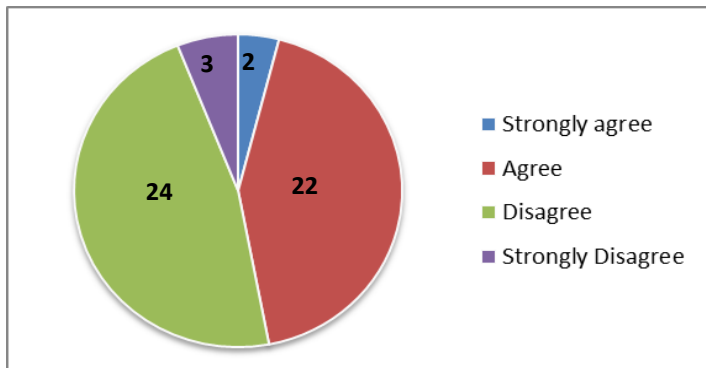
How would you rate the general wellness of the community residents? 59 people answered this question as indicated on the chart. 3 people, or 5% rated the general wellness of the community residents as Very Good; 37 people, or 63% indicated a Good rating; 18 people, or 30 % indicated a Poor rating, and 1 person or 2% indicated they felt the general wellness of the community residents was Very Poor.



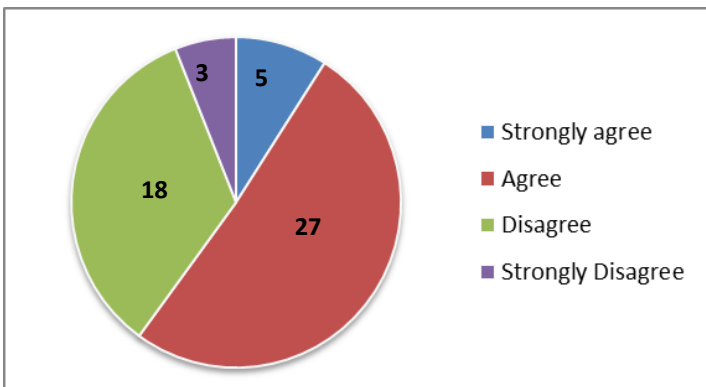
What do you think are the THREE most common health problems that impact our community? 51 people answered this question as indicated on the chart. The three most common responses for health problems were heart disease (listed 25 times), diabetes (listed 20 times) and cancer (listed 14 times). As shown on the chart, drug abuse was also listed as a concern within the community, listed 21 times on the survey. To a lesser degree, respondents also noted respiratory/lung issues, hypertension and obesity as issues of concern. These areas were noted 22% and 12% respectively.



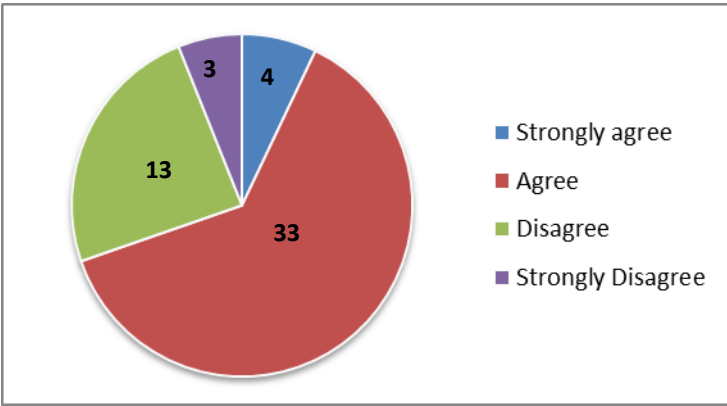
What do you think are the THREE most common “risky” behaviors that impact our community’s poor health? 48 people answered this question as indicated on the chart. The most commonly listed risky behavior was drug abuse, which was listed 47 times for a rate of 98%; followed by smoking listed 24 times for a rate of 50%; then followed by alcohol abuse listed 21 times for a rate of 44%. To a lesser degree, respondents also noted poor self care, lack of exercise, lack of education and poor eating habits.



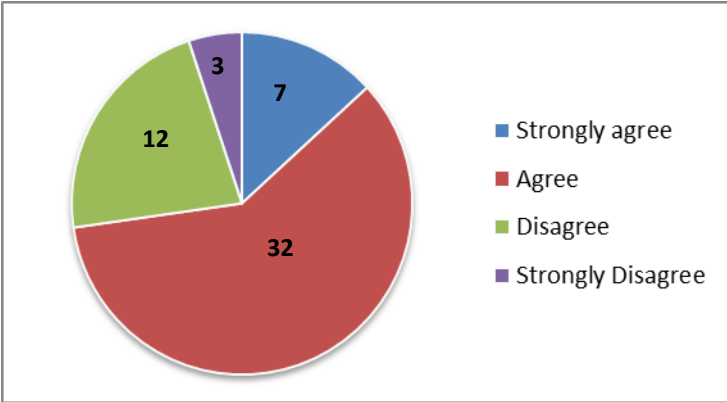
I live in a healthy community? 51 people answered this question. 2 people strongly agreed and 22 people agreed they live in a healthy community, while 24 people disagreed and 3 people strongly disagreed.



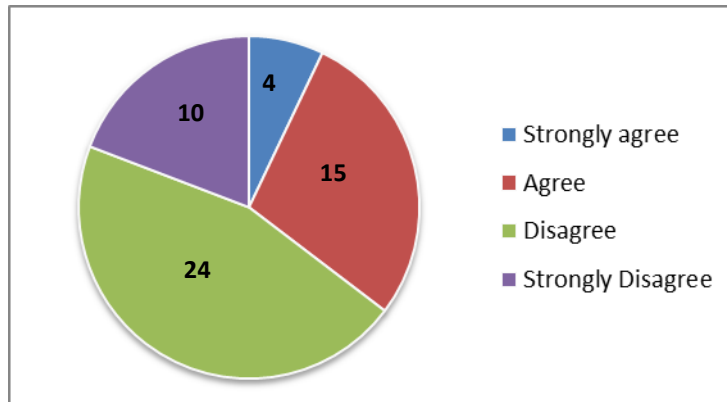
Braxton County offers a variety of wellness activities to assist with making healthy lifestyle choices. 53 people answered this question. 5 people strongly agreed and 27 people agreed that Braxton County offers a variety of wellness activities, while 18 people disagreed and 3 people strongly disagreed.



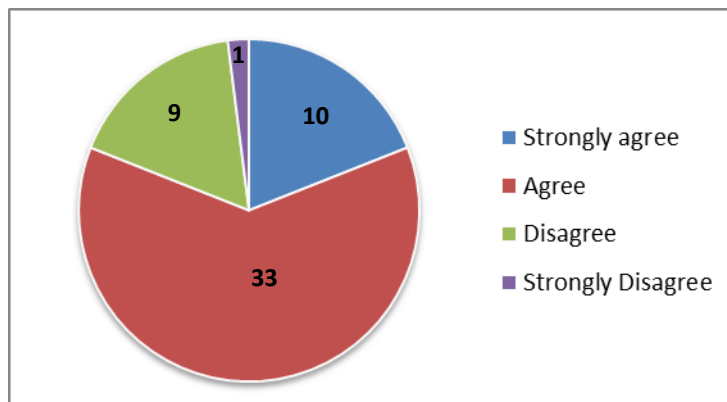
I am a healthy person. 53 people answered this question. 4 people strongly agreed and 33 people agreed they were healthy people, while 13 people disagreed and 3 people strongly disagreed.



Most people can access health care services easily in Braxton County and surrounding areas. 54 people answered this question. 7 strongly agreed and 32 agreed that health care services are easily accessed in Braxton County and surrounding areas, while 12 people disagreed and 3 people strongly disagreed.



There are enough doctors in Braxton County to meet the needs of every person. 53 people answered this question. 4 strongly agreed and 15 agreed that Braxton County has enough doctors to meet the needs of the community, while the majority or 24 people disagreed and 10 people strongly disagreed.



Health care providers in Braxton County provide good quality service. 53 people answered this question. 10 people strongly agreed and the majority or 33 people agreed that health care providers in Braxton County provide quality service, while 9 people disagreed and 1 person strongly disagreed.

SUMMARY

Survey participants are primarily 65 years of age and over, female, married from 2 adult households with zero children living in the home. The reported household income is generally \$50,000 and above, while the participants unanimously reported having health insurance coverage.

The majority use Braxton County Memorial for healthcare services. Of those selecting another facility for services, Lewis, Nicholas and Kanawha Counties were evenly indicated as areas of choice for healthcare.

In general, healthcare is considered accessible at 72%, the community is a good place to raise children (93%), and Braxton County rated good to very good as having adequate support systems for the elderly (90%).

The three most common health problems are reported as heart disease, diabetes and cancer. Drug abuse was also listed as a concern under this area of the survey, listed at a rate of 41%.

The three most common “risky behaviors” reported are drug abuse, smoking and alcohol abuse. The concern about drug abuse was a top area of concern overall, listed respectively at a rate of 67% overall.

The participants were almost equally divided between those who believe they live in a healthy community (47%) and those who do not (53%). Although a slight majority of participants felt that they do not live in a healthy community, the majority agreed that Braxton County offers an adequate variety of wellness activities to assist with making healthy lifestyle choices.

The majority of participants believe there are not enough doctors in Braxton County to meet the needs of every person. There are 34% who think there are not enough doctors, while 19% think there are enough doctors.

The majority of participants believe that healthcare providers in Braxton County provide good quality service, at a rate of 81%.

SOURCE OF INFORMATION BEYOND THE CURRENT BCMH COMMUNITY HEALTH NEEDS ASSESSMENT DATA

<https://www.census.gov/quickfacts/fact/table/braxtoncountywestvirginia/PST045217>

https://www.wvoems.org/media/331357/trauma%20center%20list_medical%20command_website%201_2_18.pdf

<https://datausa.io/profile/geo/braxton-county-wv/>



Braxton County Memorial Hospital Community Health Survey Questionnaire

The ZIP code for my residence is: _____

1. **What is your age?**
 17 or younger 18-24 25-44 45-64 65 & Over
2. **What is your marital status?**
 Married Divorced Widowed Single
3. **What is your gender?**
 Male Female
4. **How many adults are in your household (18 or older)?** _____
5. **How many children are in your household (17 or younger)?** _____
6. **What is your household income?**
 Less than \$20,000 \$20,000-\$29,000 \$30,000-\$39,000 \$40,000-\$49,000 Over \$50,000
7. **Do you have health insurance?**
 Yes No
8. **Where do you and members of your household go for health care services such as emergency care or hospital care? (If other, please list where)**
 Braxton County Lewis County Nicholas County
 Other _____
9. **If you have children how would you rate Braxton County as a good place to raise your children?**
 Very Good Good Poor Very Poor
10. **How would you rate the support system for the elderly in Braxton County?**
 Very Good Good Poor Very Poor
11. **How would you rate the general wellness of community residents?**
 Very Good Good Poor Very Poor
12. **What do you think are the THREE most common health problems that impact our community?
PLEASE LIST THREE:**

CONTINUED ON BACK.....



13. *What do you think are the **THREE** most “risky” behaviors that impact our community’s health?*
PLEASE LIST THREE:

14. *I Live in a “Healthy Community”*

Strongly Agree Agree Disagree Strongly Disagree

15. *Braxton County offers a wide variety of wellness activities to assist with making healthy lifestyle choices.*

Strongly Agree Agree Disagree Strongly Disagree

16. *I am a healthy person.*

Strongly Agree Agree Disagree Strongly Disagree

17. *Most people can access health care services easily in Braxton County and surrounding areas.*

Strongly Agree Agree Disagree Strongly Disagree

18. *There are enough doctors in Braxton County to meet the needs of every person.*

Strongly Agree Agree Disagree Strongly Disagree

19. *Health care providers in Braxton County provide good quality service.*

Strongly Agree Agree Disagree Strongly Disagree

**Thank you for taking the time to complete this survey.
Please return it in the postage paid envelope provided.**